

3deluxe / 3DReid / 3LHD / 3XN / 70°N arkitektur / ADR S.R.O. / Alejandro Aravena Architects / Antonino Cardillo / archimedialab / Arhitektid Muru & Pere / ARQme / Arquitectura en Proceso / ARTechnic architects / BROISSIN architects / Coll-Barreu Arquitectos / Customr / ECDM Architects / Giancarlo Mazzanfi Arquitectos / GROU P A / Henning Larsen Architects / J. MAYER H. Architects / Jackson Clements Burrows Architects / JDS Architects / Kosmos / LAM architects / LAVA / Lyons Architects / Mass Studies / Massimiliano & Doriana Fuksas / MOHO Architects / MVRDV / Neil M. Denari Architects Inc. / OFS arkitekti / ONL / Pacific Environments Architects / querkraft / R&Sief(n) / René van Zuuk Architekten / rintala eggertsson / Rojkind arquitectos / Rüdiger Lainer + Partner Architekten / SAKO Architects / S-M.A.O. / Stan Allen Architect / Stanley Saitowitz Natama Architects Inc. / Suppose Design Office / UNStudio / UPI-2M / Vicens + Ramos / Wiel Arets Architects / Wingårdh Arkitektkontor AB /

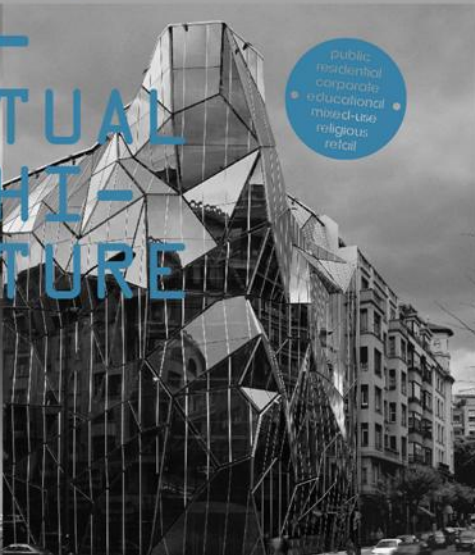
3deluxe / 3DReid / 3LHD / 3XN / 70°N arkitektur / ADR S.R.O. / Alejandro Aravena Architects / Antonino Cardillo / archimedialab / Arhitektid Muru & Pere / ARQme / Arquitectura en Proceso / ARTechnic architects / BROISSIN architects / Coll-Barreu Arquitectos / Customr / ECDM Architects / Giancarlo Mazzanfi Arquitectos / GROU P A / Henning Larsen Architects / J. MAYER H. Architects / Jackson Clements Burrows Architects / JDS Architects / Kosmos / LAM architects / LAVA / Lyons Architects / Mass Studies / Massimiliano & Doriana Fuksas / MOHO Architects / MVRDV / Neil M. Denari Architects Inc. / OFS arkitekti / ONL / Pacific Environments Architects / querkraft / R&Sief(n) / René van Zuuk Architekten / rintala eggertsson / Rojkind arquitectos / Rüdiger Lainer + Partner Architekten / SAKO Architects / S-M.A.O. / Stan Allen Architect / Stanley Saitowitz Natama Architects Inc. / Suppose Design Office / UNStudio / UPI-2M / Vicens + Ramos / Wiel Arets Architects / Wingårdh Arkitektkontor AB /

CON-  
CEPTUAL  
ARCHI-  
TECTURE  
/



CONCEPTUAL ARCHITECTURE

CON-  
CEPTUAL  
ARCHI-  
TECTURE  
/



- public
- residential
- corporate
- educational
- mixed-use
- religious
- retail

ISBN 978 900 105444 5 2



sandu

sandu

# Maritime Youth House

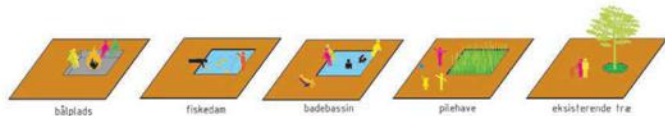
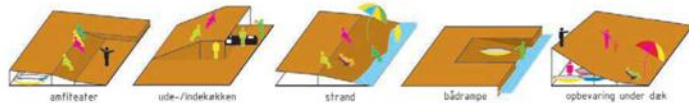
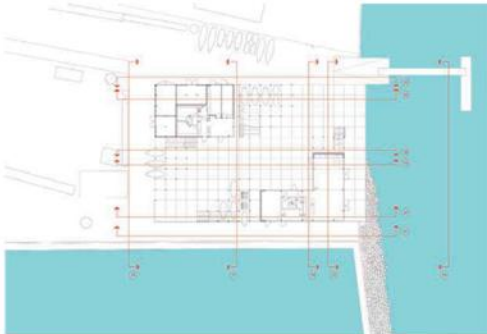
Architects / JDS Architects  
Photography / Aulis Ja Saari  
Floor area / 2.000m

UNLQ



The concept of the Maritime Youth House project is that instead of using 1/4 of the project's budget, which was originally allocated by the client towards cleaning the polluted soil of the site, we discovered that the pollution was heavy metals and therefore stable. So if the ground wasn't reachable, one wouldn't have to remove/clean it. We then decided to lay out a wooden deck on the entirety of the site, thus spending money for architecture/program/effect rather than invisible waste.

The interior of the building is very basic, with one major characteristic: the front house, which is used as a common room and which is where most of the daily activities take place, is more luxurious than the workshop and storage building on the back corner, but still in a very puritan way. The difference is that the floor in the workshop is a standard grey concrete while in the community space it's a white concrete with white stones. The presence of hard surfaces everywhere on the inside is meant as a contrast to the wooden exterior, an inversion of what is commonly done (wood indoor, asphalt outdoor). This reflects the dominance of outdoor activities of the youth house. The actual 'room' of the Maritime Youth house is the wooden deck. It enables all the programs, both indoor and outdoor.







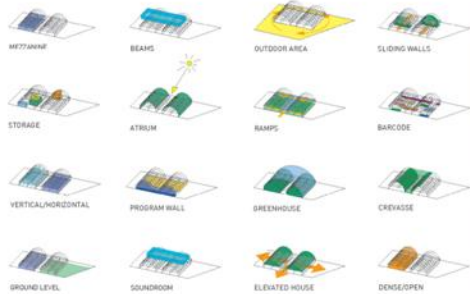
## SJA Sjakket

Architects / JDS Architects  
Photography / Felix Luong - Veger Rosen  
Floor area / 2.000m<sup>2</sup>

### PHOTO

A base camp for immigrant youths, JDS designed this facility utilizing an unoccupied, former factory building that had been previously infested with mold. The exterior twin-peak silhouette and gables were subject to the rules of preservation within the Copenhagen area, so the project called for a revitalization of the existing building. Thus, we gutted one of the vaulted buildings in order to allow space for a vast sports hall, and then organized the smaller, more intimate programs into the second hall. A large garage door installation also allows the south side to open into the courtyard, acting as an extension into the urban realm. Within the existing "canyon" between the two vaulted roofs a secret oasis of sorts was conceived as a roof deck. Above this space, the studio of Ghetto Noise Records is located in an industrial shipping container, spanning the two peaks. This exists as the only architectural addition to the mass of the building and has become an icon of Sjakket's presence on the industrial skyline of northwest Copenhagen.





# VM-HOUSES

Architects / PL07 + BIG + JDS  
Floor area / 25-000sqm

Photography / Eaten Bruun, Jimmy Cohrsen, Milla Lund, Stuart McIntyre, Jesper Carlsberg, Johan Fouellin

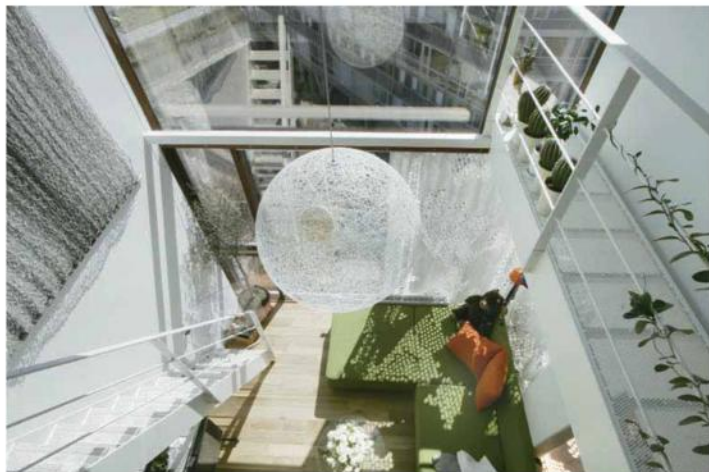
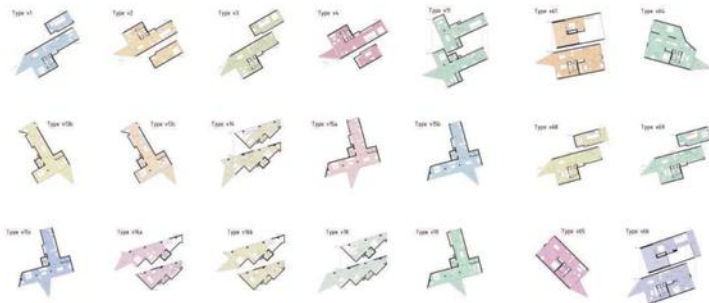
RESIDENTIAL



The manipulated perimeter block of the V building is clearly defined in its four corners, but opened internally and along its sides. The vis-à-vis with the neighbouring M house is eliminated by pushing the slab in its centre, ensuring diagonal views to the west, open fields around. The building volume provides optimal air, daylight and views to all apartments with triangular-shaped balconies characterizing the south facing facade. All apartments have a double-height space to the north and wide panoramic views to the south.

People can access the apartments from a central corridor that cuts through the building volume and opens up towards daylight and views at each end. The corridors create connections to elevators and staircases and function as a local community space where people can meet spontaneously and children can play.

A similar logic of the diagonal slab is used in the M building, although in this case it is broken down into smaller portions. Here, the typology of Le Corbusier's Unité d'habitation is reinterpreted and mutated: the central corridors are short and receive light from both ends. Individual terraces are all on the south facing side of the building, and the roof terrace can be reached from the central corridors.





Floor 1



Floor 2



Floor 3

