

NEXT-GENE 20

下代基因20

Ao-Di Grand Land Architecture
International Project, Taipei

la Biennale di Venezia

11. Mostra
Internazionale
di Architettura
Eventi collaterali

第11屆威尼斯建築雙年展



Zaha Hadid
House



Zaha Hadid
Museum



隈研吉
Kengo Kuma



陳國康
Ray Chen



MVRDV



劉同庚
Yu-Tung Liu



張永和
Yung Ho Chang



郭晉祥
Gyu-Chang Rung



Jahn



姚仁宇
Kira Yao



森山由紀子
Toshiko Mori



曾成德
Chun-Tai Tseng



中田晃久
Akihisa Hirata



黃雲暉
Huang-Hui Huang



Fernando Martin Menis



楊家凱
Kyle Chia-Kai Yang



孫海林
Hailim Sun



邱文傑
Jay Wen-Chieh Chiu



Julian De Smaet



黃雲暉
Sheng Yuan Huang



GRAFT



陳雪儀
Hsueh-Yi Chien

Curators

Hu-Tung Liu 劉滄雄 Asia University / NCTU 亞洲大學 / 交通大學
Tai-Nien Lu 呂泰年 Genuine Group 捷年集團

Forewords

Toyo Ito "The Siedlung of the 21st Century"
Aaron Betsky "A Home beyond a House"

Julien De Smedt

The Twirl House / 迴旋之屋

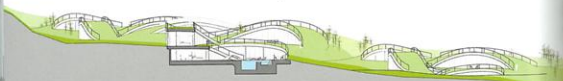


Julien De Smedt
He has been awarded the *Hanning Larsen Prize* twice, the *Young Architect of the Year Award*, the *Contractworld Award 2006*, the *AIAA Award*, the *Golden Lion Award* on the 9th Venice Architecture Biennale, the *Special Selection of IOC / IAKS Award (International Olympic Committee)* and the *International Association for Sports and Leisure Facilities*, and so on.

In the history of architecture there are few moments when a project as ambitious as this have occurred, gathering the worlds leading architects to make avant-garde yet realistic case study houses for one of the most beautiful sites in the world. The task handed to us of creating a harmonious architecture within nature in such a beautiful context in Taiwan highlights the clients true ambitions as patrons of architecture, life and culture and a will to make the inhabitants of Next-Gen truly at home in Taiwan's most beautiful region. The expected clientele for the project was busy modern individuals and families from Taipei who need an escape from the capital's busy and chaotic settings.

When asked to make a series of houses in an Eden-like location in Ao-Di, Taiwan, we first fear to disturb a place kept naturally intact for centuries. As we visited the site right after a very strong typhoon we understood that the place was, although naturally kept, in constant micro changes: the typhoons, common in that region, would remodel the crust of the earth, disturbing the soft vegetation and manipulate slightly the land... on the base of that we decided to create architecture out of nature. We designed a house that manipulates the landscape without adding anything to it. A house in symbiosis with its environment. A house that celebrates views and protects itself from being viewed.

There was a certain paradox in being located in such a beautiful location and be so many different architectural expressions all crammed next to each other. Our first house alone had 7 neighbors. Our reaction was then to make a house that's introverted rather than looking outwards. A patio house. We started looking at it as a walled donut. We then applied the site slope to the simple shaped which allowed it to have a part poking up and viewing out to the beautiful landscape. Further more we decided to embed the donut immediately into the landscape, erasing its presence as a volume. Operating Lucio Fontana-like incisions into the topography we've ended with a house that is a mixture of nature and architecture, that is introverted and extraverted all at once.



Architect: JDS, Julien De Smedt, Andrew Griffin
Design team: Alexandra Krizbelis, Alexandros Gerocostas, Andre Comjan, Filip Lipicic, Felix Leung, Francisco Vilas, Gunnar Hoos, Heechan Park, Iak Kaskiner, Jorge Lopez, Kristoffer Harling, Kazuma Toki, Lu Kelsey, Martin Van De Beek, Ruben Rendon, Susanna Stone, Reid Leiley, Wouter Dons

